



Bosch and G4Tec collaboration extends joint solutions in video surveillance Video Management software “Symmetry” supports video products of Bosch

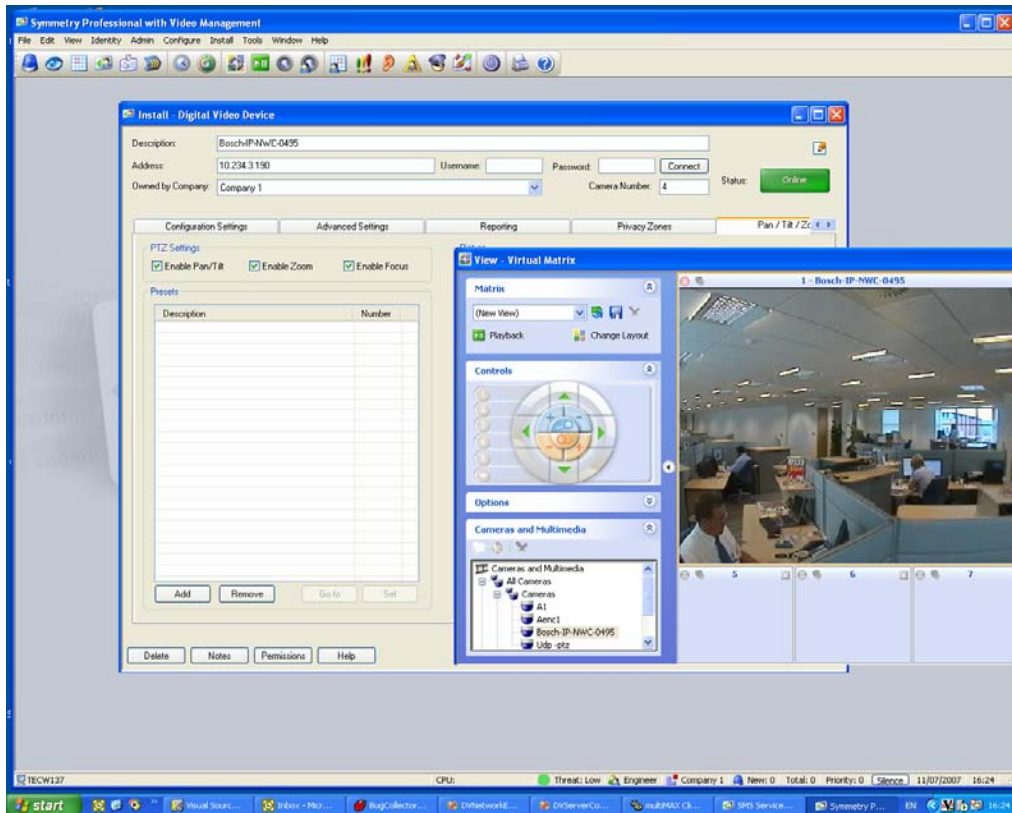
January 2008

PI 6015 ST Goe

- ▶ G4Tec extends support for Bosch video products to include Video over Internet Protocol cameras, encoders and Bosch Divar Digital Recorder
- ▶ Bosch Software Development Kit facilitates integration of high quality video up to 25 FPS at 4CIF in G4Tec’s Video Management System “Symmetry”

Recent collaborative development work by Bosch Security Systems and G4Tec means that Bosch’s Video over IP (Internet Protocol) products are now seamlessly integrated into G4Tec’s Symmetry Video Management System. Bosch supported the development via its Software Development Kit (SDK) to facilitate the integration of high quality video up to 25 FPS at 4CIF in G4Tec’s Symmetry Video Management System.

Bosch Security Systems is a global leader in IP cameras and encoders. The Bosch IP cameras are based on the award-winning Dinion, FlexiDome and AutoDome modular cameras. The UK-based company G4Tec is a major player in the design, manufacture, installation and service of fully-integrated security management solutions. The company’s Symmetry Video Management System provides total integration with leading Digital Video Recorder and Network Video Recorder products, including Bosch’s Divar Digital Recorder.



The Bosch Group is a leading global supplier of technology and services. In the areas of automotive and industrial technology, consumer goods, and building technology, some 260,000 associates generated sales of 43.7 billion euros in fiscal 2006. The Bosch Group comprises Robert Bosch GmbH and its roughly 300 subsidiary and regional companies in over 50 countries. This worldwide development, manufacturing, and sales network is the foundation for further growth. Bosch spends more than three billion euros each year for research and development, and in 2006 applied for over 3,000 patents worldwide. The company was set up in Stuttgart in 1886 by Robert Bosch (1861-1942) as “Workshop for Precision Mechanics and Electrical Engineering.”

The special ownership structure of Robert Bosch GmbH guarantees the entrepreneurial freedom of the Bosch Group, making it possible for the company to plan over the long term and to undertake significant up-front investments in the safeguarding of its future. Ninety-two percent of the share capital of Robert Bosch GmbH is held by Robert Bosch Stiftung GmbH, a charitable foundation. The majority of voting rights are held by Robert Bosch Industrietreuhand KG, an industrial trust. The entrepreneurial ownership functions are carried out by the trust. The remaining shares are held by the Bosch family and by Robert Bosch GmbH.

Additional information can be accessed at www.bosch.com.